



LED Truss Warmer

The Truss Mate was designed to be inconspicuous but have a clean and powerful narrow output, using three 3w Tri-Colour LEDs. The Truss Mate has both M10 and M12 threads making it easy to rig to truss in three different positions. The showpro Truss Mate also comes with an IR remote which makes it ideal for applications where DMX control is not desired.

Physical

| | |
|------------------|-------------------|
| Size of Unit | 155 x 150 x 145mm |
| Item Weight | 0.85kg |
| Quantity in Case | Loose item |



Electrical

| | |
|------------------|---------------------|
| Rated Power | 12watt |
| Input Power | 100-240v AC 50/60hz |
| Power Connection | IEC Lead |

Mounting Options

| | |
|--------------|-------------------------|
| Hanging Type | Trigger Clamp / Coupler |
| Freestanding | Yes |
| Expo LX | Yes |

Optical

| | |
|--------------------|----------------------------|
| Light Source | 3 x 3w Tri-colour RGB LEDs |
| Beam Angle | 16° |
| Colour Temperature | N/A |
| CRI | 4 |
| Light Output 2m | 805 |
| Light Output 4m | 218 |
| Light Output 6m | 102 |

Control

| | |
|----------------------|----------------------------|
| Control Method | DMX / Auto / Static Colour |
| DMX Mode | 3 / 8 ch |
| DMX Channel List | - |
| DMX Connection Types | 5pin DMX |

Environmental

| | |
|---------------------------|------------|
| IP Rating | IP22 |
| Cooling | Convection |
| Max Operating Temperature | 40° |

Compatibility

Small, compact fitting to install inside truss to light it any colour

Accessories Included

- 1 x Safety Chain
- 1 x Trigger Clamp

Colour

RGBW

Information Links

Manufacture Link [LED Truss Warmer](#)

Data Sheet [User Guide](#)

Data Sheet [Photometry Report](#)

Report of Photometry & Chromaticity for Light Source

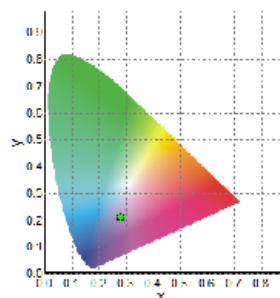


Product Description

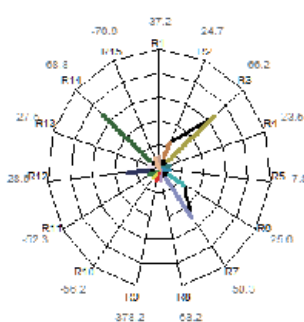
| | | |
|------------------|-----------------------------|-----------------|
| Product Name | LED Truss Warmer Truss Mate | |
| Sample Number | | |
| Date(YYYY/MM/DD) | 2020/5/6 15:08:57 | |
| Manufacturer | Pro Shop Showtech | |
| Tester | HTH | |
| Temperature(°C) | 20 | Re. Humidity(%) |
| Reviewer | | |

Photometry and Chromaticity

| | | | |
|------------------|--------|--|---------|
| CIE_x | 0.2813 | Duv | -0.0473 |
| CIE_y | 0.2108 | λ_d (nm) | 0.0 |
| CIE_u' | 0.2266 | Purity(%) | 0 |
| CIE_v' | 0.3820 | FWHM(nm) | 25 |
| CCT(K) | 82358 | SP ratio | 3.64 |
| Illuminance(lx) | 805 | PPFD($\mu\text{mol}/\text{m}^2\text{s}$) | 18.5 |
| λ_p (nm) | 456 | CRI(Ra) | 4 |
| TLCI(Qa) | 19.6 | GAI | 188.8 |
| GAI BB8 | 173 | GAI BB15 | 153 |
| TM-30 Rf | 41 | TM-30 Rg | 126 |



CIE1931 Chromaticity Diagram



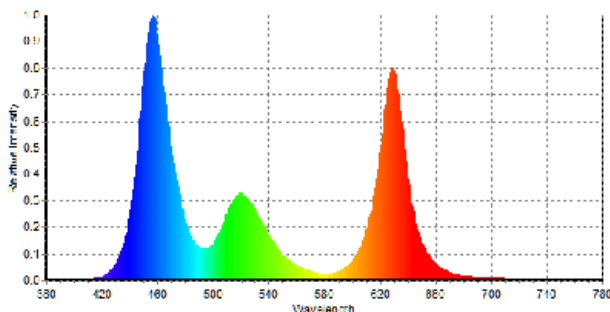
Radar Diagram of CRI

| | | | |
|--------|-------|-----------------|--------|
| CQS-Qa | 62 | Re(thru R1~R15) | -30 |
| R1 | -37.2 | R6 | 25.6 |
| R2 | 24.7 | R7 | 50.3 |
| R3 | 66.2 | R8 | -63.2 |
| R4 | -23.5 | R9 | -378.2 |
| R5 | -7.8 | R10 | -56.2 |
| | | R11 | -52.3 |
| | | R12 | 28.6 |
| | | R13 | -27.5 |
| | | R14 | 68.8 |
| | | R15 | -70.6 |

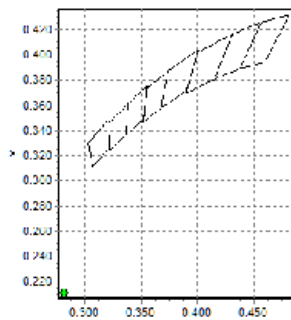
Flicker Frequency(Hz)

Flicker %

Flicker Index



Spectral Distribution



C78.377-2008