



LED ShowPro 60w White

Small compact fitting with a warm white output. Good for general room light, can have coloured gel installed.



Physical

Size of Unit	160r x 150mm deep
Item Weight	2.6kg
Quantity in Case	8
Size of Unit Cased	1200 x 600 x 690mm
Cased Weight	75kg

Electrical

Rated Power	100 watt
Input Power	100-240v AC 50hz
Power Connection	IEC lead

Mounting Options

Hanging Type	Yoke
Freestanding	Yes
Expo LX	Yes

Optical

Light Source	50w COB LED Chip
Beam Angle	25° conical
Colour Temperature	3800k
CRI	82
Light Output 2m	3716
Light Output 4m	1030
Light Output 6m	493

Control

Control Method	Stand alone / DMX
DMX Mode	1ch
DMX Channel List	-
DMX Connection Types	5pin DMX

Environmental

IP Rating	IP20
Cooling	Heatsink
Max Operating Temperature	50°

Compatibility

Lightweight par 38 replacement

Information Links

Manufacture Link [Harry the hirer](#)

Data Sheet [Photometry Report](#)

Report of Photometry & Chromaticity for Light Source

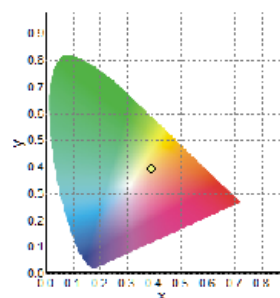


Product Description

Product Name	LED ShowPro 60w 25deg lens	
Sample Number		
Date(YYYY/MM/DD)	2020/5/6 12:00:01	
Manufacturer		
Tester	HTH	
Temperature(°C)	20	Re. Humidity(%)
Reviewer		

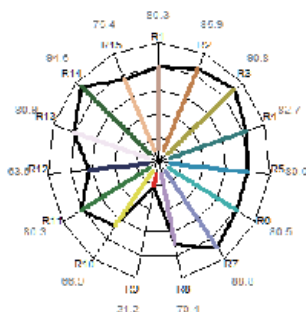
Photometry and Chromaticity

CIE_x	0.3928	Duv	0.0041
CIE_y	0.3931	λ_d (nm)	578.0
CIE_u'	0.2267	Purity(%)	36
CIE_v'	0.5104	FWHM(nm)	166
CCT(K)	3806	SP ratio	1.58
Illuminance(lx)	3672	PPFD($\mu\text{mol}/\text{m}^2 \text{ s}$)	56.0
λ_p (nm)	585	CRI(Ra)	82
TLCI(Qa)	74.3	GAI	67.3
GAI BB8	89	GAI BB15	92
TM-30 Rf	83	TM-30 Rg	97



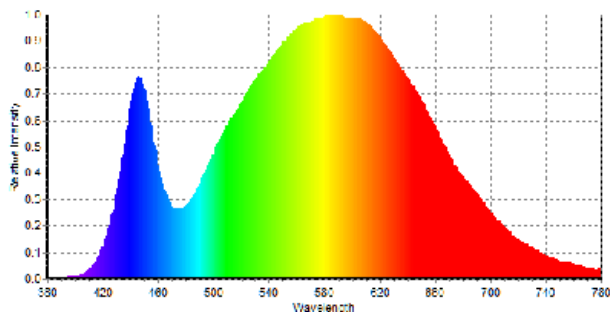
CIE1931 Chromaticity Diagram

CQS-Qa	84	Re(thru R1~R15)	76
R1	80.3	R6	80.5
R2	85.9	R7	88.8
R3	90.8	R8	70.4
R4	82.7	R9	21.2
R5	80.0	R10	66.9
		R11	80.3
		R12	63.6
		R13	80.9
		R14	94.6
		R15	75.4

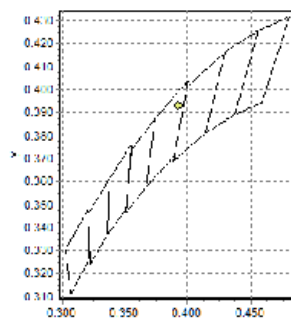


Radar Diagram of CRI

Flicker Frequency(Hz)	Flicker %
Flicker Index	



Spectral Distribution



C78.377-2008