



LED Rush PAR 2 RGBW Zoom

The Martin RUSH PAR 2 RGBW Zoom is a bright single-lens LED PAR Can with fully premixed colour from 12 RGBW LEDs and a spectacular 10 – 60 ° zoom. It offers electronic dimming and strobe and comes with a flexible bracket for floor or truss mounting.



Physical

Size of Unit	266 x 287 x 329mm
Item Weight	5.5kg
Quantity in Case	4
Size of Unit Cased	600 x 600 x 770mm
Cased Weight	58kg

Electrical

Rated Power	151watt
Input Power	100-240v AC 50/60hz
Power Connection	Powercon connector

Mounting Options

Hanging Type	Yoke
Freestanding	Yes
Expo LX	No

Optical

Light Source	12 x 10w RGBW Osram Ostar LEDs
Beam Angle	10-60°
Colour Temperature	6000k
CRI	77
Light Output 2m	10 degree: 585, 60 degree: 7746
Light Output 4m	10 degree: 156, 60 degree: 1951
Light Output 6m	10 degree: 75, 60 degree: 854

Control

Control Method	Stand alone / DMX
DMX Mode	-
DMX Channel List	5ch / 9ch
DMX Connection Types	5pin DMX in/out

Environmental

IP Rating	IP20
Cooling	Forced air temperature-regulated, low noise
Max Operating Temperature	0-40°

Compatibility

Zoomable wash light suitable for stage light / key light
Room wash

Information Links

Manufacture Link [Rush Par](#)

Data Sheet [Photometry Report](#)

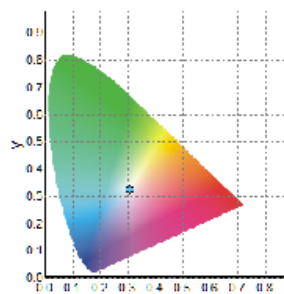
Min Zoom

Report of Photometry & Chromaticity for Light Source



Product Description

Product Name	LED Rush Par white only min zoom	
Sample Number		
Date(YYYY/MM/DD)	2020/5/6 12:38:21	
Manufacturer	Martin	
Tester	HTH	
Temperature(°C)	20	Re. Humidity(%)
Reviewer		

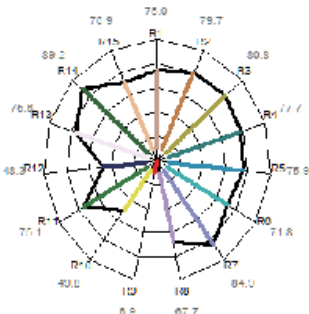


CIE1931 Chromaticity Diagram

Photometry and Chromaticity

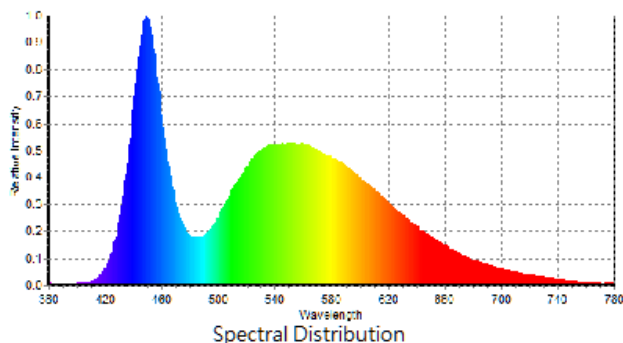
CIE_x	0.3079	Duv	0.0034
CIE_y	0.3245	λ_d (nm)	487.2
CIE_u'	0.1961	Purity(%)	9
CIE_v'	0.4652	FWHM(nm)	27
CCT(K)	6817	SP ratio	2.15
Illuminance(lx)	585	PPFD($\mu\text{mol}/\text{m}^2 \text{ s}$)	8.6
λ_p (nm)	449	CRI(Ra)	77
TLCl(Qa)	60.5	GAI	88.5
GAI BB8	89	GAI BB15	94
TM-30 Rf	75	TM-30 Rg	95

CQS-Qa	75	Re(thru R1~R15)	68
R1	75.0	R6	71.8
R2	79.7	R7	84.9
R3	80.8	R8	67.7
R4	77.7	R9	-6.9
R5	75.9	R10	49.8
		R11	75.1
		R12	48.3
		R13	75.6
		R14	89.2
		R15	70.9

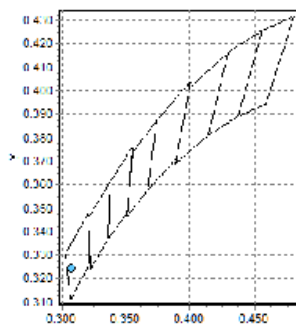


Radar Diagram of CRI

Flicker Frequency(Hz)	Flicker %
Flicker Index	



Spectral Distribution



C78.377-2008

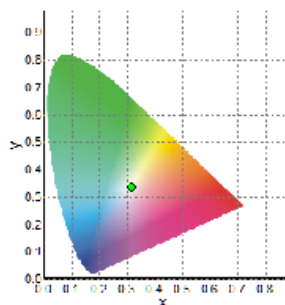
Max Zoom

Report of Photometry & Chromaticity for Light Source



Product Description

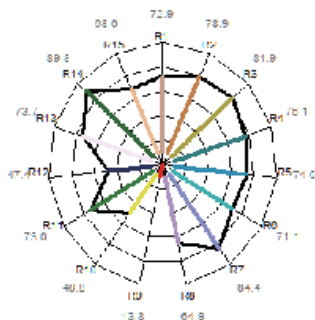
Product Name	LED Rush Par white only max zoom	
Sample Number		
Date(YYYY/MM/DD)	2020/5/6 12:40:17	
Manufacturer	Martin	
Tester	HTH	
Temperature(°C)	20	Re. Humidity(%)
Reviewer		



CIE1931 Chromaticity Diagram

Photometry and Chromaticity

CIE_x	0.3156	Duv	0.0053
CIE_y	0.3361	λ_d (nm)	493.7
CIE_u'	0.1972	Purity(%)	6
CIE_v'	0.4725	FWHM(nm)	27
CCT(K)	6306	SP ratio	2.07
Illuminance(lx)	7746	PPFD($\mu\text{mol}/\text{m}^2 \text{ s}$)	111.7
λ_p (nm)	449	CRI(Ra)	76
TLCI(Qa)	59.3	GAI	85.1
GAI BB8	88	GAI BB15	92
TM-30 Rf	74	TM-30 Rg	94

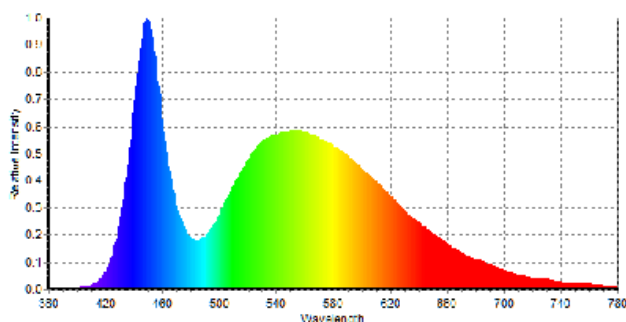


Radar Diagram of CRI

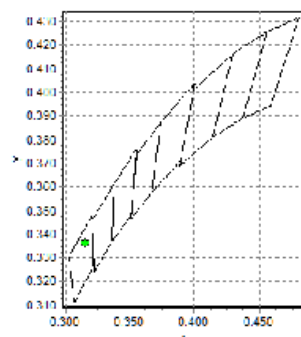
CQS-Qa	75	Re(thru R1~R15)	66
R1	72.9	R6	71.1
R2	78.9	R7	84.4
R3	81.9	R8	64.9
R4	76.1	R9	-13.8
R5	74.0	R10	48.8
		R11	73.0
		R12	47.4
		R13	73.7
		R14	89.8
		R15	68.0

Flicker Frequency(Hz)
Flicker Index

Flicker %



Spectral Distribution



C78.377-2008