



LED Multipar 1w

- LED multipar replacement of a traditional multipar.
- Full RGB mixing, lower power consumption light weight.



Physical

Size of Unit	310 x 215 x 296mm
Item Weight	4kg
Quantity in Case	Loose item
Cased Weight	Loose item

Electrical

Rated Power	120w (0.5amp)
Input Power	100-240v A C 50/60Hz
Power Connection	IEC Connector

Mounting Options

Hanging Type	Yoke
Freestanding	No
Expo LX	No

Optical

Light Source	24 x 1w LED RGB
Beam Angle	25°
Colour Temperature	-
CRI	-
Light Output 2m	-
Light Output 4m	-
Light Output 6m	-

Control

Control Method	Built in macros / DMX
DMX Mode	3ch DMX
DMX Channel List	-
DMX Connection Types	5pin DMX in/out

Environmental

IP Rating	IP20
Cooling	Heatsink
Max Operating Temperature	40°

Suitability

Replace old multipar with LED
Colour mixing with built in macros
3ch fixture so good with small console like 6ch or minims

Information Links

Manufacturer Link [Harry the hirer](#)

Data Sheet [Photometry Report](#)

Report of Photometry & Chromaticity for Light Source

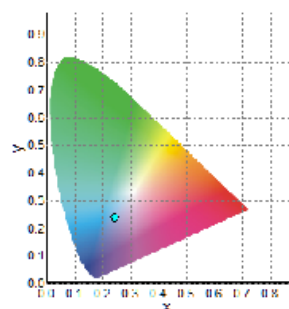


Product Description

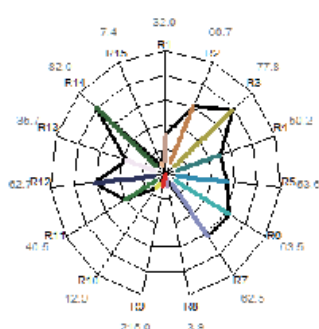
Product Name	led mpar 1w	
Sample Number		
Date(YYYY/MM/DD)	2020/5/20 17:07:51	
Manufacturer	ProShop	
Tester	HTH	
Temperature(°C)	20	Re. Humidity(%)
Reviewer		

Photometry and Chromaticity

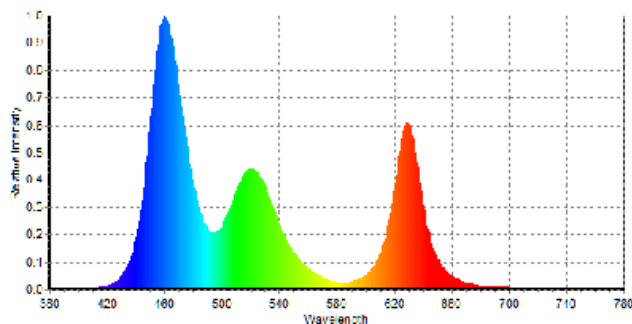
CIE_x	0.2434	Duv	-0.0013
CIE_y	0.2368	λ_d (nm)	475.5
CIE_u'	0.1819	Purity(%)	40
CIE_v'	0.3980	FWHM(nm)	29
CCT(K)	1.1452E5	SP ratio	4.05
Illuminance(lx)	1470	PPFD($\mu\text{mol}/\text{m}^2 \text{ s}$)	30.2
λ_p (nm)	460	CRI(Ra)	51
TLCl(Qa)	21.1	GAI	148.9
GAI BB8	137	GAI BB15	132
TM-30 Rf	54	TM-30 Rg	107



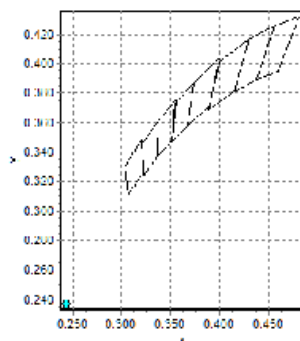
CIE1931 Chromaticity Diagram



Radial Diagram of CRI



Spectral Distribution



C78.377-2008