

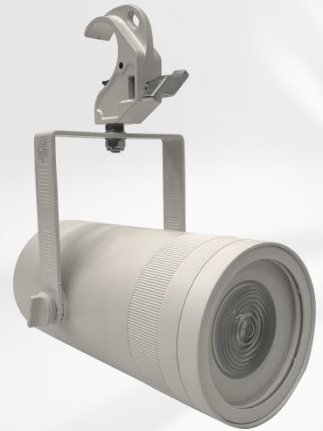


# Gallery Spot 80

LED Gallery Spot light is a multipar replacement with an 80w LED chip, and DMX making it an ideal unit for expo lighting to replace the old 575w halogen multipar. The zoomable lens captures more area to be lit. It is capable of DMX using 1 channel, keeps it simple with fade on and off.

## Physical

|                    |                    |
|--------------------|--------------------|
| Size of Unit       | 290 x 130 x 130mm  |
| Item Weight        | 3.5kg              |
| Quantity in Case   | 12                 |
| Size of Unit Cased | 1175 x 580 x 655mm |
| Cased Weight       | 90kg               |



## Electrical

|                  |                     |
|------------------|---------------------|
| Rated Power      | 100w Max            |
| Input Power      | 100-240v AC 50/60Hz |
| Power Connection | IEC Connector       |

## Mounting Options

|              |                         |
|--------------|-------------------------|
| Hanging Type | Yoke with trigger clamp |
| Freestanding | Nil                     |
| Expo LX      | Yes on truss            |

## Optical

|                    |                           |
|--------------------|---------------------------|
| Light Source       | 80w LED COB               |
| Beam Angle         | 15° - 80°                 |
| Colour Temperature | 4000k                     |
| CRI                | 84Ra                      |
| Light Output 2m    | 3235 Lux wide 8590 narrow |
| Light Output 4m    | 552 Lux wide 1637 narrow  |
| Light Output 6m    | 253 Lux wide 706 narrow   |

## Control

---

|                      |                     |
|----------------------|---------------------|
| Control Method       | DMX and Stand Alone |
| DMX Mode             | 1 Channel           |
| DMX Channel List     | 1. Dimmer           |
| DMX Connection Types | 5 Pin               |

## Environmental

---

|                           |          |
|---------------------------|----------|
| IP Rating                 | IP45     |
| Cooling                   | Heatsink |
| Max Operating Temperature | 80°      |

## Compatibility

---

## Information Links

---

Manufacturer Link [Harry the hirer](#)

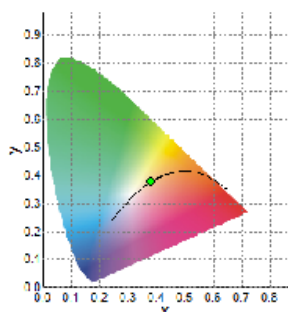
Data Sheet [Photometry Report](#)

## Report of Photometry & Chromaticity for Light Source



### Product Description

|                  |                    |                 |
|------------------|--------------------|-----------------|
| Product Name     | Gallery Spot       |                 |
| Sample Number    |                    |                 |
| Date(YYYY/MM/DD) | 2020/9/11 11:00:11 |                 |
| Manufacturer     | HTH                |                 |
| Tester           |                    |                 |
| Temperature(°C)  | 20                 | Re. Humidity(%) |
| Reviewer         |                    |                 |



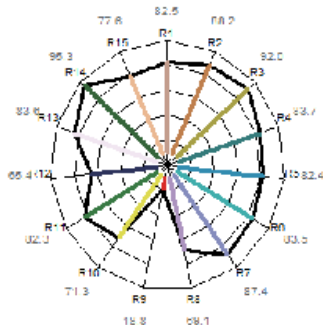
CIE1931 Chromaticity Diagram

### Photometry and Chromaticity

|                  |        |   |         |
|------------------|--------|---|---------|
| CIE_x            | 0.3813 | Duv   | -0.0008 |
| CIE_y            | 0.3755 | $\lambda_d$ (nm)                                      | 579.7   |
| CIE_u'           | 0.2262 | Purity(%)   | 27      |
| CIE_v'           | 0.5012 | FWHM(nm)  | 155     |
| CCT(K)           | 3967   | SP ratio  | 1.66    |
| Illuminance(lx)  | 3235   | PPFD 400-700nm( $\mu\text{mol}/\text{m}^2/\text{s}$ ) | 46.23   |
| $\lambda_p$ (nm) | 591    | CRI(Ra)   | 84      |
| TLCI(Qa)         | 69.5   | GAI   | 75.5    |
| GAI BB8          | 96     | GAI BB15  | 100     |
| TM-30 Rf         | 83     | TM-30 Rg  | 98      |

|        |    |                 |    |
|--------|----|-----------------|----|
| CQS-Qa | 83 | Re(thru R1~R15) | 78 |
|--------|----|-----------------|----|

|    |      |     |      |     |      |
|----|------|-----|------|-----|------|
| R1 | 82.5 | R6  | 83.5 | R11 | 82.3 |
| R2 | 88.2 | R7  | 87.4 | R12 | 65.4 |
| R3 | 92.0 | R8  | 69.1 | R13 | 83.6 |
| R4 | 83.7 | R9  | 18.8 | R14 | 95.3 |
| R5 | 82.4 | R10 | 71.3 | R15 | 77.6 |

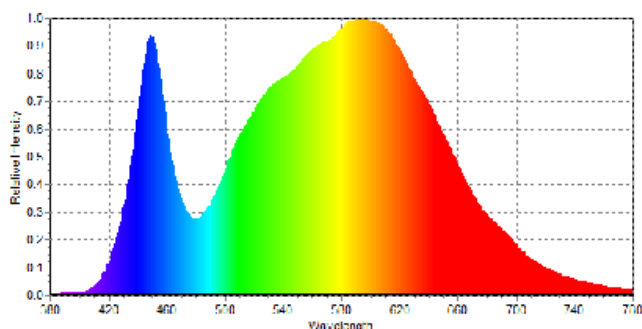


Radar Diagram of CRI

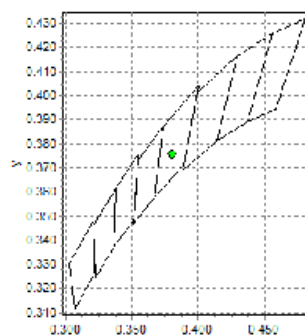
Flicker Frequency(Hz)

Flicker %

Flicker Index



Spectral Distribution



C78.377-2008