



Brass LED Garden Light

- Garden light good for up-lighting trees, hedges and buildings
- Small and compact hides well into greenery or outdoor locations
- Weatherproof bronze housing



Physical

Size of Unit	460 x 70mm
Item Weight	1.4kg
Quantity in Case	36 Roadcase / 8 box
Size of Unit Cased	800 x 590 x 680mm
Cased Weight	105kg

Electrical

Rated Power	12w
Input Power	100-240v AC 50/60Hz
Power Connection	Fixed plug top

Mounting Options

Hanging Type	No
Freestanding	Yes (Stake)
Expo LX	No

Optical

Light Source	1 x 12w LED Chip
Beam Angle	70°
Colour Temperature	2900k
CRI	84
Light Output 2m	506
Light Output 4m	127
Light Output 6m	62

Control

Control Method	Non dimmable
DMX Mode	No
DMX Channel List	No
DMX Connection Types	No

Environmental

IP Rating	IP65
Cooling	Heatsink
Max Operating Temperature	40°

Information Links

Manufacturer Link [Harry the hirer](#)

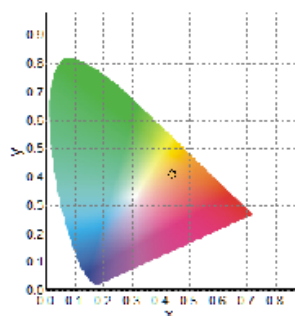
Data Sheet [Photometry Report](#)

Report of Photometry & Chromaticity for Light Source



Product Description

Product Name	Brass LED Garden light 12w	
Sample Number		
Date(YYYY/MM/DD)	2020/5/6 13:08:32	
Manufacturer	HTH	
Tester	HTH	
Temperature(°C)	20	Re. Humidity(%)
Reviewer		



CIE1931 Chromaticity Diagram

Photometry and Chromaticity

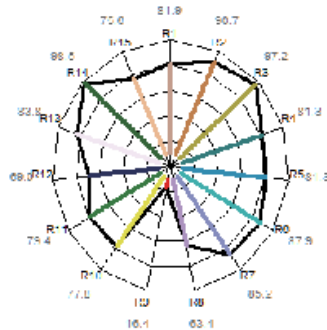
CIE_x	0.4410	Duv	0.0010
CIE_y	0.4080	λ_d (nm)	582.6
CIE_u'	0.2515	Purity(%)	55
CIE_v'	0.5235	FWHM(nm)	139
CCT(K)	2964	SP ratio	1.32
Illuminance(lx)	506	PPFD($\mu\text{mol}/\text{m}^2 \text{ s}$)	7.8
λ_p (nm)	610	CRI(Ra)	84
TLCI(Qa)	73.7	GAI	51.5
GAI BB8	91	GAI BB15	97
TM-30 Rf	84	TM-30 Rg	96

CQS-Qa	85	Re(thru R1~R15)	78		
R1	81.9	R6	87.9	R11	79.4
R2	90.7	R7	85.2	R12	69.0
R3	97.2	R8	63.4	R13	83.8
R4	81.3	R9	16.4	R14	98.5
R5	81.3	R10	77.8	R15	75.6

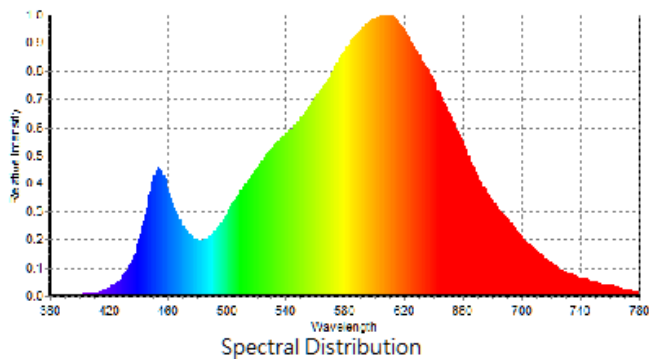
Flicker Frequency(Hz)

Flicker %

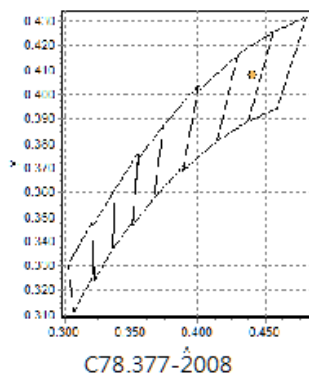
Flicker Index



Radar Diagram of CRI



Spectral Distribution



C78.377-2008