



Astera AX3 Lightdrop

- German designed battery operated and easy to use IP65 RGBW puck, aimed at stage lighting and corporate events
- Used as an up-light, as well as hanging or standing spotlight and inside translucent objects, truss, etc.
- Extremely compact, yet offers a high brightness paired with long battery runtime and range.



Physical

Size of Unit	120 x 59 x 114mm
Item Weight	0.7kg
Quantity in Case	9
Size of Unit Cased	500 x 360 x 160mm
Cased Weight	11.95kg

Electrical

Rated Power	Up to 20 hours run time (battery)
Input Power	5v (charger)
Power Connection	100v-240v AC 50/60Hz AC (battery pack)

Mounting Options

Hanging Type	Bracket / Clamp / Trigger clamp
Freestanding	Yes
Expo LX	No

Optical

Light Source	15w CREE RGBW LED Chip
Beam Angle	13°
Colour Temperature	2600k
CRI	48
Light Output 2m	325
Light Output 4m	75
Light Output 6m	31

Control

Control Method	CRMS / DMX / APP / Controller
DMX Mode	Multiple modes 3-64ch
DMX Connection Types	CRMX

Environmental

IP Rating	IP65
Cooling	-
Max Operating Temperature	0° - 40°

Suitability

Good for table centrepieces
Small and compact unit
Can be well hidden
Bright
Long battery life

Accessories Included

Must be booked in quantities of 8

1 x Charging Case
8 x AX3 LightDrop
24 x M4 Eyebolts
8 x Safety Cables
1 x Remote Control

Frost Gels for wider angle
8 x Flood Filter 30°
8 x Wide Angle Filter 120°
8 x Wall Wash Filter 17°x 46°

Information Links

Manufacturer Link [Astera](#)

Manufacturer Data Sheet [Astera AX3 Data Sheet](#)

Manufacturer Manual [Astera Manual](#)

Photometry Data Sheet [Photometry Report](#)

**Harry
the hirer.[®]**

AX3 LightDrop



8 AX3 LightDrop



24 M4 Eyebolts



8 Safety Cables



1 Remote Control

Report of Photometry & Chromaticity for Light Source

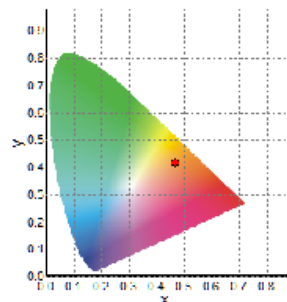


Product Description

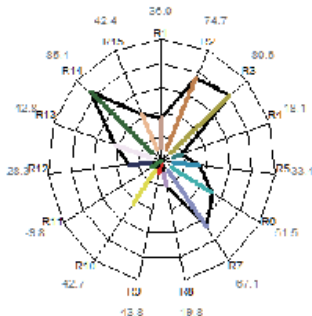
Product Name	AX3 Lightdrop	
Sample Number		
Date(YYYY/MM/DD)	2020/5/7 12:05:04	
Manufacturer	Astera	
Tester	HTH	
Temperature(°C)	20	Re. Humidity(%)
Reviewer		

Photometry and Chromaticity

CIE_x	0.4696	Duv	0.0017
CIE_y	0.4174	λ_d (nm)	584.1
CIE_u'	0.2657	Purity(%)	66
CIE_v'	0.5314	FWHM(nm)	26
CCT(K)	2620	SP ratio	1.61
Illuminance(lx)	325	PPFD($\mu\text{mol}/\text{m}^2\text{s}$)	5.7
λ_p (nm)	632	CRI(Ra)	48
TLCI(Qa)	19.9	GAI	51.6
GAI BB8	112	GAI BB15	100
TM-30 Rf	61	TM-30 Rg	112



CIE1931 Chromaticity Diagram



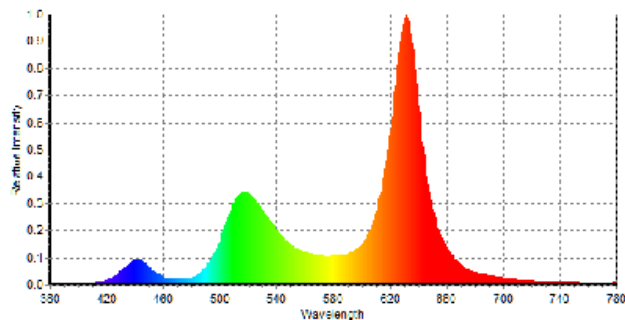
Radar Diagram of CRI

CQS-Qa	63	Re(thru R1~R15)	38
R1	36.0	R6	51.5
R2	74.7	R7	67.1
R3	80.6	R8	19.8
R4	18.1	R9	-43.8
R5	33.4	R10	42.7
		R11	-9.8
		R12	28.3
		R13	42.8
		R14	85.4
		R15	42.4

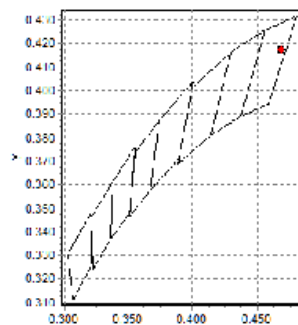
Flicker Frequency(Hz)

Flicker %

Flicker Index



Spectral Distribution



C78.377-2008