



150w LED High Bay

LED High bay flood light with high output COB LED chips, equivalent to traditional 400w Mercury Vapor high bays using only 25% of the electricity.



Physical

Size of Unit	410R x 370mm deep
Item Weight	3.5kg
Quantity in Case	8
Size of Unit Cased	915H x 915W x 945mmD
Cased Weight	92kg

Electrical

Rated Power	150w
Input Power	100v-240v 50/60hZ
Power Connection	Fixed cable piggyback plug

Mounting Options

Hanging Type	Suspended from eyebolt only
Freestanding	No
Expo LX	No

Optical

Light Source	150w
Beam Angle	120° Conical
Colour Temperature	5300k
CRI	75
Light Output 2m	2628
Light Output 4m	836
Light Output 6m	434

Control

Control Method	Non dimmable
DMX Mode	No
DMX Channel List	No
DMX Connection Types	No

Environmental

IP Rating	45
Cooling	Heatsink
Max operating temperature	80°

Information Links

Manufacturer Link [Harry the hirer](#)

Data Sheet [Photometry Report](#)

Report of Photometry & Chromaticity for Light Source

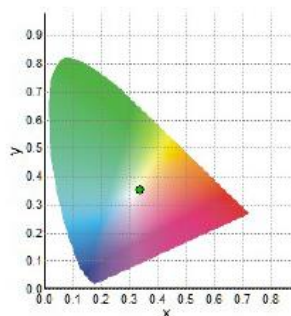


Product Description

Product Name	150w LED High Bay white reflector	
Sample Number		
Date(YYYY/MM/DD)	2020/5/6 10:19:36	
Manufacturer	HTH	
Tester	HTH	
Temperature(°C)	20	Re. Humidity(%)
Reviewer		

Photometry and Chromaticity

CIE_x	0.3355	Duv	0.0038
CIE_y	0.3512	λ_d (nm)	559.4
CIE_u'	0.2051	Purity(%)	6
CIE_v'	0.4831	FWHM(nm)	24
CCT(K)	5379	SP ratio	1.89
Illuminance(lx)	2628	PPFD($\mu\text{mol}/\text{m}^2 \text{ s}$)	36.5
λ_p (nm)	450	CRI(Ra)	75
TLCl(Qa)	55.1	GAI	81.7
GAI BB8	90	GAI BB15	95
TM-30 Rf	73	TM-30 Rg	94

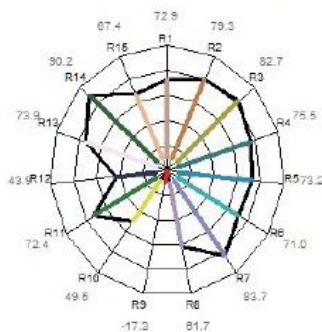


CIE1931 Chromaticity Diagram

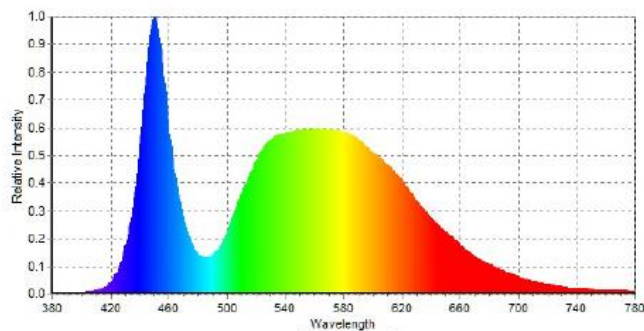
CQS-Qa	73	Re(thru R1~R15)	65
R1	72.9	R6	71.0
R2	79.3	R7	83.7
R3	82.7	R8	61.7
R4	75.5	R9	-17.3
R5	73.2	R10	49.5
R11	72.4	R12	43.9
R13	73.9	R14	90.2
R15	67.4		

Flicker Frequency(Hz)
Flicker Index

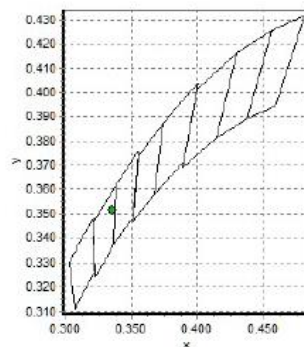
Flicker %



Radar Diagram of CRI



Spectral Distribution



C78.377-2008